

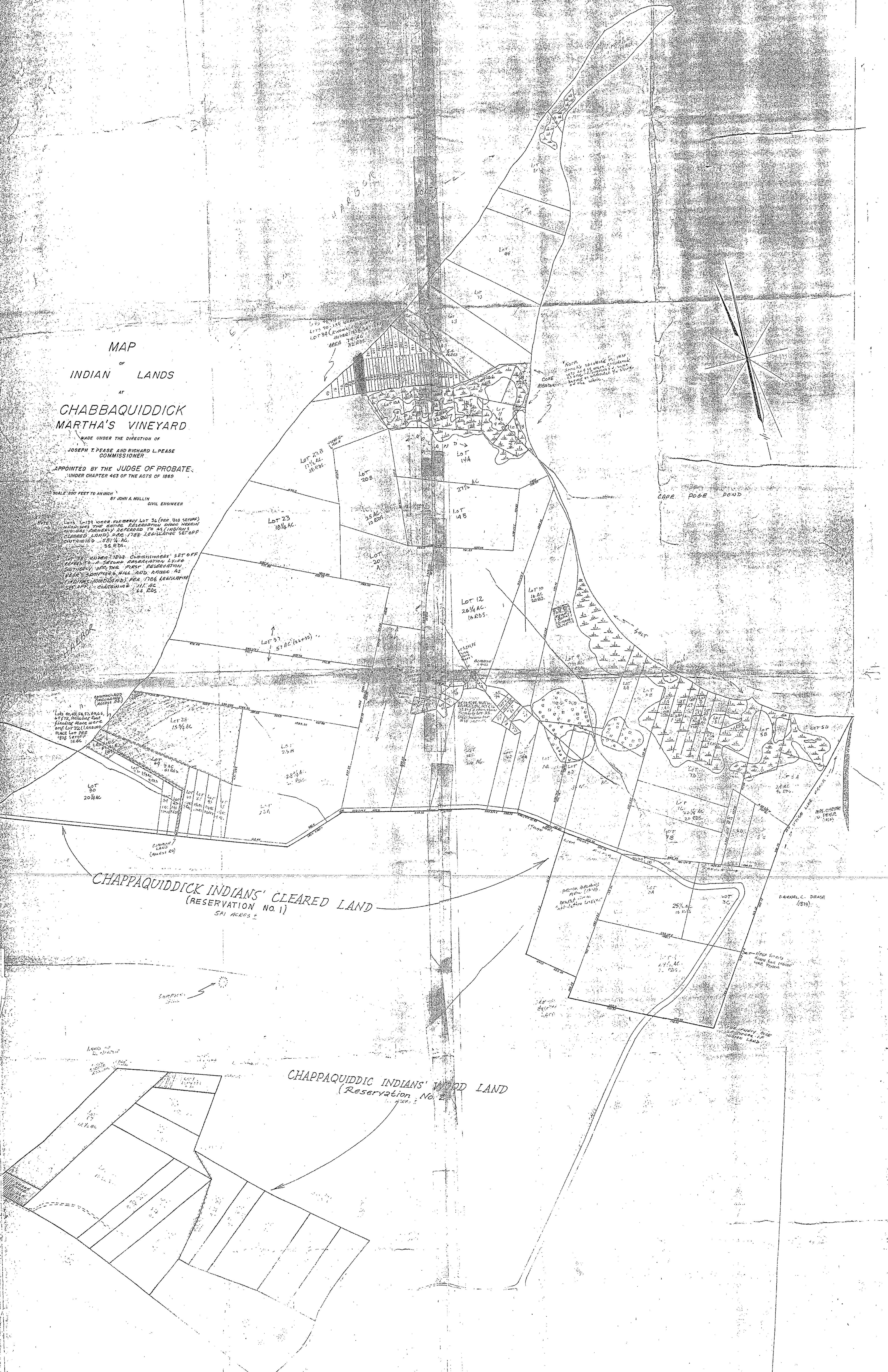
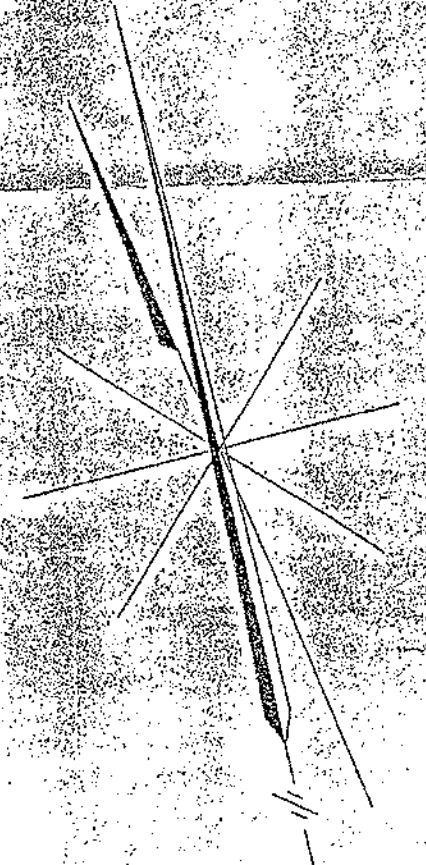
MAP
OF
INDIAN LANDS
AT
CHAPPAQUIDDICK
MARTHA'S VINEYARD

MADE UNDER THE DIRECTION OF
JOSEPH T. PEASE AND RICHARD L. PEASE
COMMISSIONER
APPOINTED BY THE JUDGE OF PROBATE
UNDER CHAPTER 463 OF THE ACTS OF 1869

SCALE: 200 FEET TO AN INCH
BY JOHN A. MULLIN
CIVIL ENGINEER

LOTS 1-139 UNDER FORMERLY LOT 32 (PER 1838 SETOFF)
CONTAINING THE ENTIRE RESERVATION GRANT MADE BY
ACT OF PARLIAMENT REFERRED TO AS (INDIANS'
CLEARED LAND) OF 1788. (SECTION SET OFF
CONTAINING 551 1/4 AC.)

LOTS 140-150 UNDER RESERVATION LIVING
SECTION OF THE FIRST RESERVATION
(PER 1788 ACT OF PARLIAMENT) PER 1786 RESOLUTION
CONTAINING 111 AC.
SECTION SET OFF 16 EDS.



CHAPPAQUIDDICK INDIANS' CLEARED LAND
(RESERVATION NO. 1)
551 1/4 ACRES ±

CHAPPAQUIDDICK INDIANS' WOOD LAND
(RESERVATION NO. 2)
226 ±

